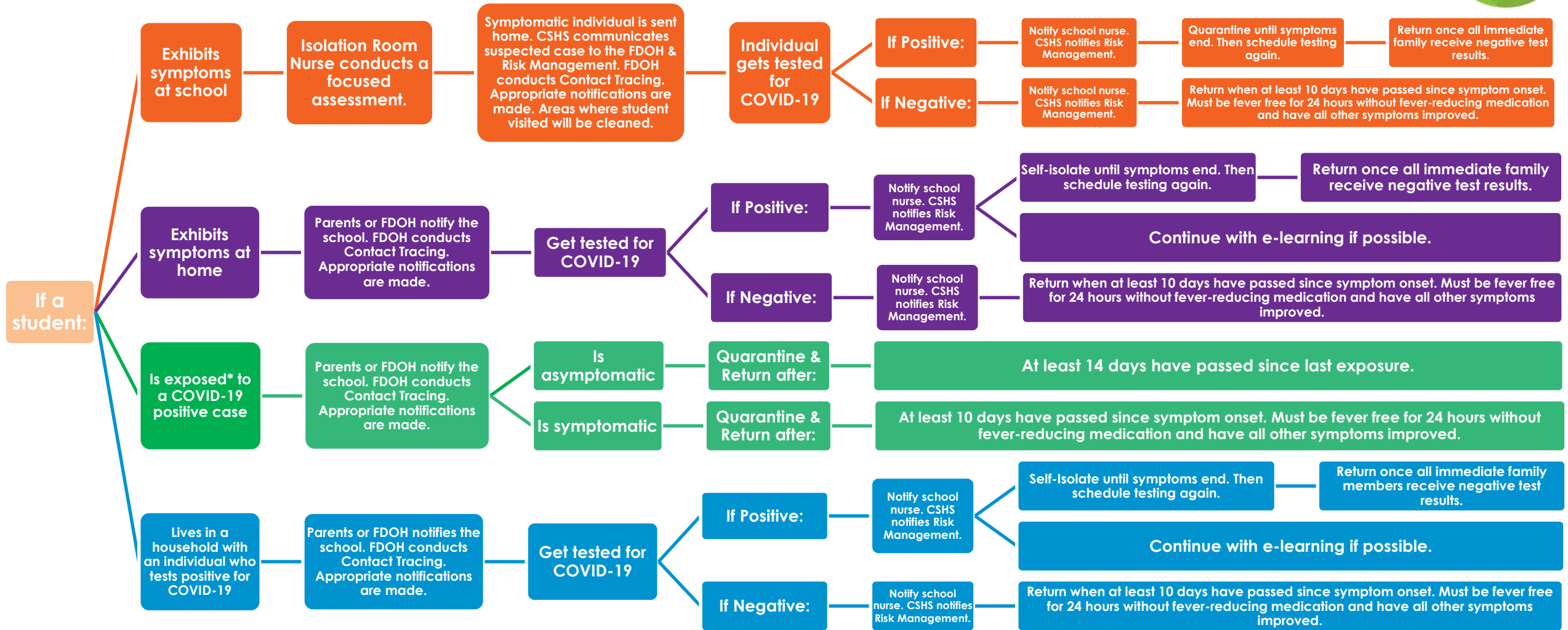


COVID-19 Symptomatic Action Tree for Students

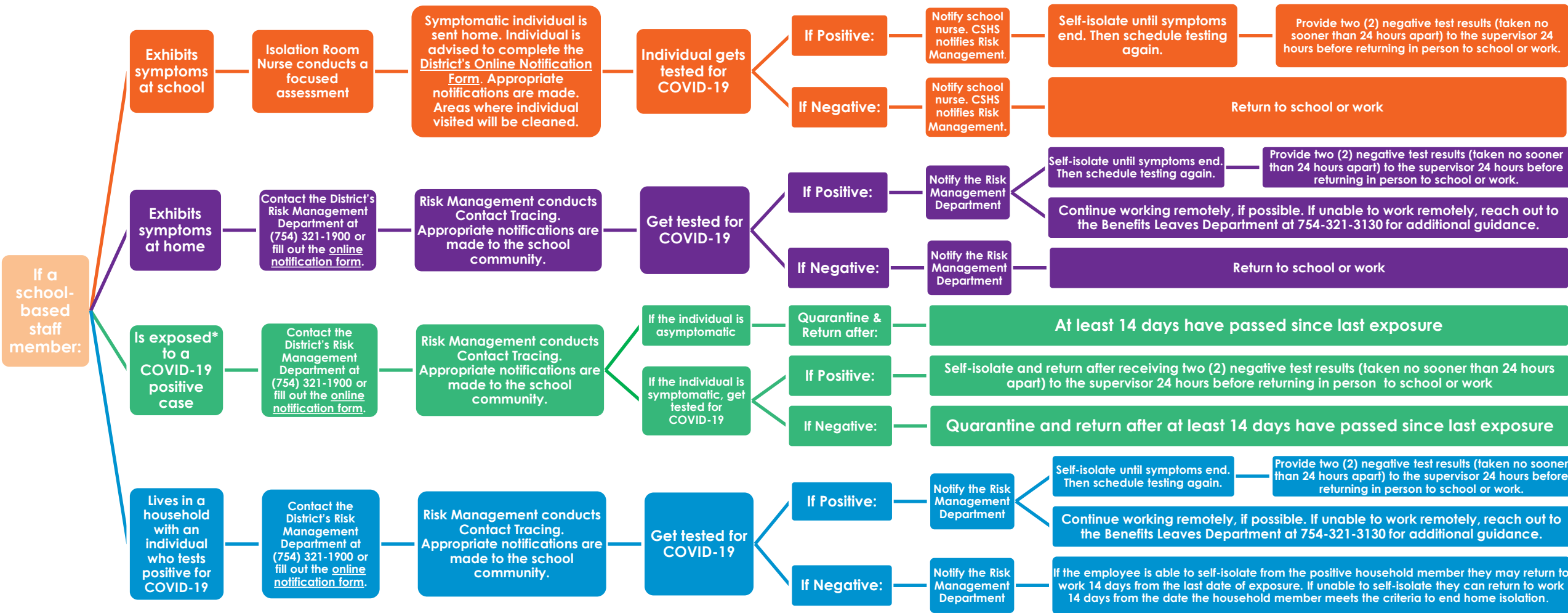
ILLUSTRATIVE



*According to the CDC, exposure is close contact of 6 feet or less for 15 minutes or more. Contact at greater than 6 feet or for less than 15 minutes is generally not sufficient enough to transmit the virus.

COVID-19 Symptomatic Action Tree for School-Based Staff

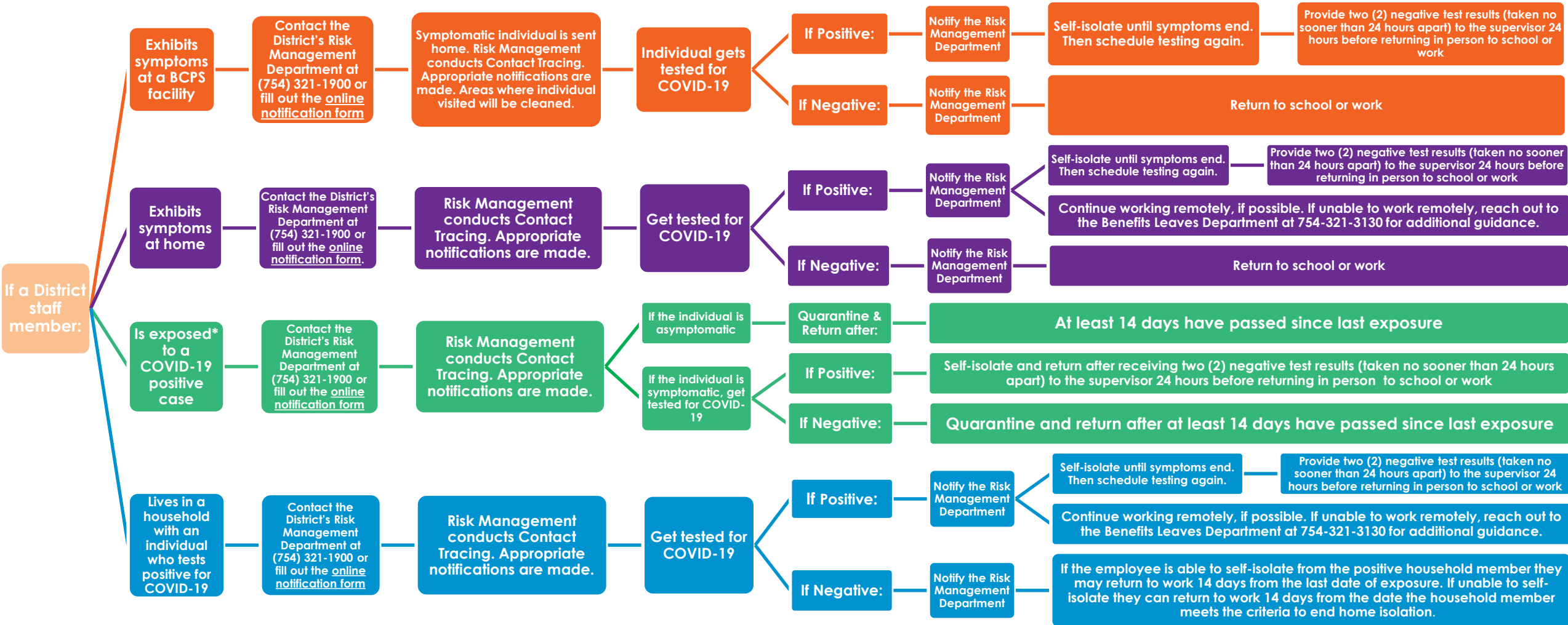
ILLUSTRATIVE



*According to the CDC, exposure is close contact of 6 feet or less for 15 minutes or more. Contact at greater than 6 feet or for less than 15 minutes is generally not sufficient enough to transmit the virus.

COVID-19 Symptomatic Action Tree for District Staff

ILLUSTRATIVE



*According to the CDC, exposure is close contact of 6 feet or less for 15 minutes or more. Contact at greater than 6 feet or for less than 15 minutes is generally not sufficient enough to transmit the virus.